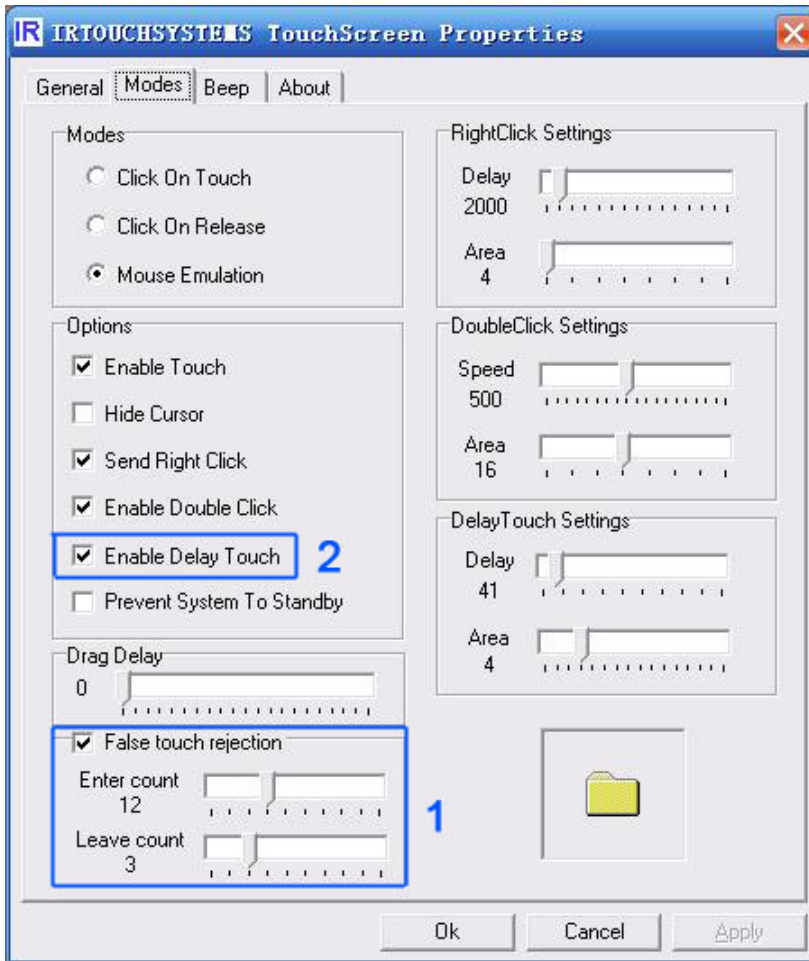


Setting of touchscreen in strong light, rain and snow condition

(As reference)

The snow and rain drop will be mistakenly a single touch. So the function of “False touch rejection” may be selected in driver to avoid the above error without the normal manipulation. The function of “Enable Delay Touch” will do the work to prevent the false touch.



Specification :

1. Each value should be gradually set in “Delay Touch Settings” after fulfillment of “Enable Delay Touch”. “Delay” is set to 40 and “Area” to 16.

2. Enter count:

It means how many times you click to approach the setting value within 3 seconds. Then driver will install the function of “False touch rejection” where quick click or scratch will be considered void except the touch point on the active area for quite a while.

3. Leave count:

”False touch rejection” is no longer effective when the click times within 5 seconds is less than the setting number.

Noted: you may find touch response in the state of dullness after enabling the function of “False touch rejection”